

By accepting our offer and ordering our product, you are acknowledging acceptance of these terms.

GGT-Footing is composed of chopped Geo-Textiles and Fibers. These materials are compressed into 300+ pound bales that are bound together with three metal wires (*Fig. 1*). The bales are stacked on wooden pallets, two bales wide and 3 bales tall, totaling 6 bales per full pallet. Then each pallet is stretch film wrapped to keep them together. On average, each complete skid weighs between **1,800 – 2,500 lbs, (1 TON+)** and is around **7-1/2' tall** (*Fig. 2*). *Fig. 2a* is a picture of our P25 ¾" Fiber in gaylord boxes (average 1000#/box).

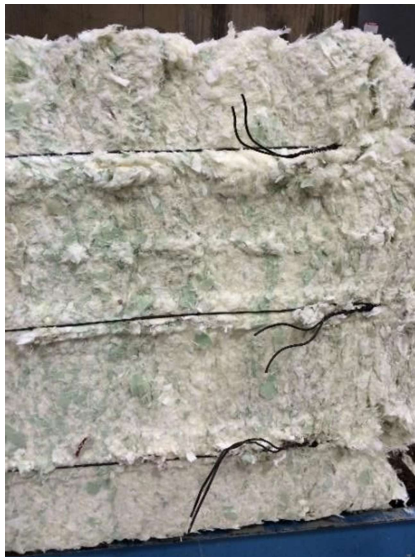


Fig. 1. Close up of a single bale, with wires.



Fig. 2. A complete footing pallet.



Fig. 2a. P25 fiber pallet (2 boxes)

As you can see, these skids can be very large (48"W x 58"D x 87"T)! It is important that you fully understand what to expect at delivery and make arrangements for accepting your order. This ensures a smooth and successful process. GGT-products are delivered by 28' pup trailers (*Fig. 4*) with/without lift gates (LG), so we will need to make sure it can easily access your facility. **Please let us know if delivery will be to a rural area, on a dirt road or an area restricted to tractor trailers.** Due to liability reasons, the truck driver is only required to transport the product from our facility to yours and is not expected to unload.

This means that you will need to have someone on site and prepared with the necessary equipment to unload it. Most residential deliveries will have a delivery appointment, meaning that the trucking company will call you to coordinate a date and time. A Lift Gate Service can be requested. A Lift Gate (LG) is a platform that is attached to the rear of the truck and is used to lower heavy items to ground level (*Fig.4*). This is very helpful if there is not a loading dock at the delivery site. This service will also include a pallet jack, shown in *Fig. 5*, for moving the product from inside the trailer to the lift gate.



Fig. 4. 28' Pup Trailer with Lift Gate



Fig. 5. Pallet Jack

If you are receiving an LTL (Less than Truck Load) with a Lift Gate, then the truck driver will place the pallets on the LG with a pallet jack and lower them to the ground for you. At this point, you will need to be able to get them from the LG to your staging area or arena. You will need to make sure you have a forklift or a tractor with forks (*Figs. 8 & 9*) to get the pallets from the lift gate to your staging area. **Make sure your equipment is rated to lift at least 2,500 Pounds.**



Fig. 8. Forklift



Fig. 9. Tractors with Fork attachments.

Once your order arrives, please make note of any damage during transport and contact your salesperson immediately. Note any damages on the carriers POD (Proof of Delivery). This insures we can file a damage claim, if necessary. A damage claim MUST be filed within 5 days of delivery.

If you are concerned about your ability to accept this type of delivery, please give us a call. We will work together to determine a solution and make sure you are properly prepared. We look forward to working with you!

Sales: Cynthia Brewster-Keating: **864-804-0011**; Amanda Wild (West Coast & MI): **864-415-2526**;
Barb Diplama (East Coast): **864-804-8664**

Office/Logistics: Kim Skipper: **864-579-4484 x103**

